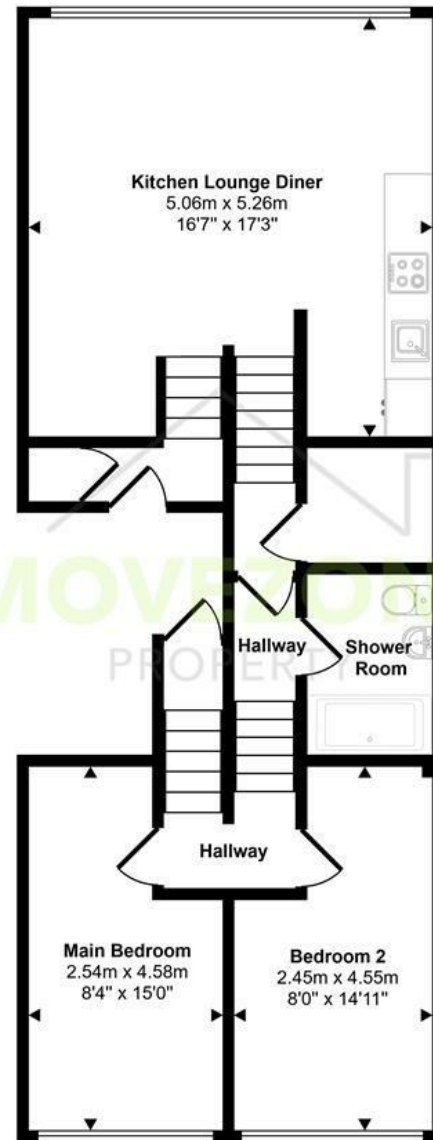


Approx Gross Internal Area  
64 sq m / 690 sq ft



Floorplan

This floorplan is only for illustrative purposes and is not to scale. Measurements of rooms, doors, windows, and any items are approximate and no responsibility is taken for any error, omission or mis-statement. Icons of items such as bathroom suites are representations only and may not look like the real items. Made with Made Snappy 360.

## Directions

## Contact

223 Southborough Lane  
Bromley  
Kent  
BR2 8AT

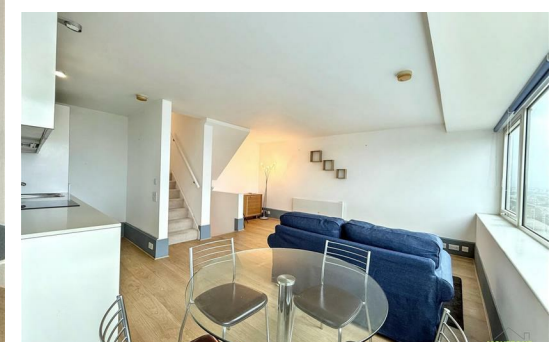
E: [info@movezone.co.uk](mailto:info@movezone.co.uk)

T: 0208 3139075

<https://www.movezone.co.uk>



2 Bed  
Flat  
located in





Aragon  
Tower George  
Beard Road

London

£2,200 PCM

 2

 1

 1

 C

A truly stunning opportunity to rent this two bedroom furnished flat situated on the 22nd floor, boasting impeccable panoramic views across London and the River Thames from both bedrooms and the lounge. With large windows throughout, this exceptional home offers light, space and breathtaking views and is sure to let quickly – early viewing is highly recommended.

The accommodation comprises a bright open plan kitchen and living area complete with appliances, two double bedrooms both enjoying spectacular views, and a modern shower room. The property is offered furnished. There's also storage cupboards inside the flat, and a large private storage cupboard in the communal area.

Located in the popular SE8 3AL area, the flat benefits from excellent transport links, including easy access to Deptford Bridge DLR, Deptford and Greenwich stations, and multiple bus routes, providing fast connections into Canary Wharf, the City and Central London. Nearby Greenwich offers a wide range of shops, cafés, restaurants, riverside walks and green spaces, making this a highly desirable place to live.

Council Tax Band: C  
EPC Rating: C  
Contingency Deposit: £2358

